

# Dynasty Spas

SPA to SWIM SPA  
COLLECTIONS



THE MOST COMFORTABLE SPA  
MADE IN THE USA.

DYNASTY SPAS®



DYNASTY SPAS



# Our Values



**Mike Deans**

*Dynasty Spas Founding President*

**Respect  
Cooperation  
Fairness  
Good Work  
Results**



**Friendship  
Contribution  
Honesty  
Confidence  
Progress**



**Clément Hudon**

*Trevi Founding President*

# Our Mission Statement

Dynasty Spas is a family business out of Athens Tennessee, part of the Trevi group of companies.

In business for over 28 years, Dynasty was built on a friendship between 2 founders and their vision to produce quality spas, with lifelong service, that would be a "daily vacation" where people would be able to relax, enjoy each other's company, as well as some well-deserved quiet time.

Our purpose goes beyond making spas, it is to offer a life-changing product and to build these true durable friendships: with our employees, with our suppliers, with our customers, but mostly, for the consumer.

**DYNASTY SPAS**

**04 4 SEASONS OF BENEFITS**

**05 M.A.E. CERTIFICATION**  
(RESEARCH AND DEVELOPMENT LAB)

**06 ANATOMY OF A DYNASTY SPA**

**07 JETS TO SUIT YOUR NEEDS**

**07 DYNASTY SPAS REVIEWS**

**08 BALNEOTHERAPY**

**09 BALNEOTHERAPY INTRO**

**10 BALNEOTHERAPY**

**11 RELAXATION AND STRESS MANAGEMENT**

**13 BACKACHES AND LUMBAR PAIN**

**15 JOINT AND MUSCLE PAIN**

**16 POSITIVE EFFECTS ON SLEEP PATTERN**

**18 CARDIOVASCULAR HEALTH**

**19-20 REFLEXOLOGY**

**VACATION COLLECTION**

**23-24 BIMINI**

**25-26 TREASURE CAY**

**27-28 SUNSET COVE**

**29-30 TRANQUILITY HARBOR**

**31-32 SERENITY COVE**

**33-34 OCEAN BREEZE**

**35-36 CABANA BAY**

**OASIS COLLECTION**

**39-40 TWIN PALMS**

**41-42 NASSAU ROYALE**

**43-44 CARIBBEAN BREEZE**

**45-46 COCONUT BAY II/III**

**47-48 PLEASURE COVE II/III**

**49-50 PALM ISLAND II/III**

**51-52 PARADISE BAY II/III**

**LUXURY COLLECTION**

**55-56 30TH ANNIVERSARY L**

**FAMILY COLLECTION**

**59 11' FAMILY ISLAND OASIS SL**

**60 11' FAMILY ISLAND OASIS**

**62 13' AQUEX PARTY**

**SWIM SPA COLLECTION**

**64 13' AQUEX PRO**

**65 13' AQUEX PRO PLUS**

**66 16' AQUEX TRAINER**

**67 17' AQUEX PRO PLUS**

**68 19' AQUEX DUAL PRO**

**69 SWIM COACH**

**STANDARD ELEMENTS & FEATURES**

**72 ACRYLIC COLORS AND SKIRTING**

**73 IN.TOUCH**

**73 INTUITIVE SPA FUNCTIONS**

**74 IN.STREAM AUDIO SYSTEM**

**75 IN.MIX ILLUMINATION**

**76 OZONATOR**

**76 TOPSIDE CONTROLS**

**77 CONTROL SYSTEM / PUMP / PLUMBING**

**78 STRUCTURE / SHELL / BASE**

**79 RMAX® HEAT-SHIELD**

**80 COVERS**

**81 SPA AND SWIM SPA WARRANTY**





## DYNASTY SPAS

### 4 SEASONS OF BENEFITS

Taking a spa is enjoyable all year round, but it's even more so in the winter. There is nothing better than enjoying warm and relaxing water to forget the inconveniences of the cold season and appreciate its beauty,

The special insulation of Dynasty Spas allows the water to remain at a high temperature even in the coldest weather. Whether you want to spice up an evening with friends, relax, or relieve your joint and muscle pain you can enjoy the benefits of Hydrotherapy 365 days a year.

- Heat-shield RMAX® Insulation System,
- Multi- Layered fiberglass spa shell,
- Foil faced RMAX® Foam Panels.
- \* Maintenance free Confer Skirting.
- ABS Permanent Bottom.
- Floor entirely covered with heat reflecting bubble insulation.
- Heated airspace.
- Up to 7 times the R-value of competing models, additional protection from freezing. Unique design protects equipment and allows easy access for maintenance and additional options.
- Acts as a sound barrier.

Dynasty Spas goes through a series of testing for the heat-shield name. We test the water temperature and regulate the process of heating, Dynasty Spas has its own Research and Development lab, to ensure your Dynasty Spas will keep you relaxed for years to come.



**DYNASTY SPAS<sup>®</sup>**  
**MODERNIZED APPLIANCE EFFICIENCY**

*"ISO 17025 LABORATORY" and "ANSI/APSP"*



**USA CERTIFIED**

## **M.A.E. CERTIFIED**

At Dynasty Spas, we take pride in our products. We ensure that our spas are aesthetically pleasing, have sturdy construction, and are energy efficient for the end user.

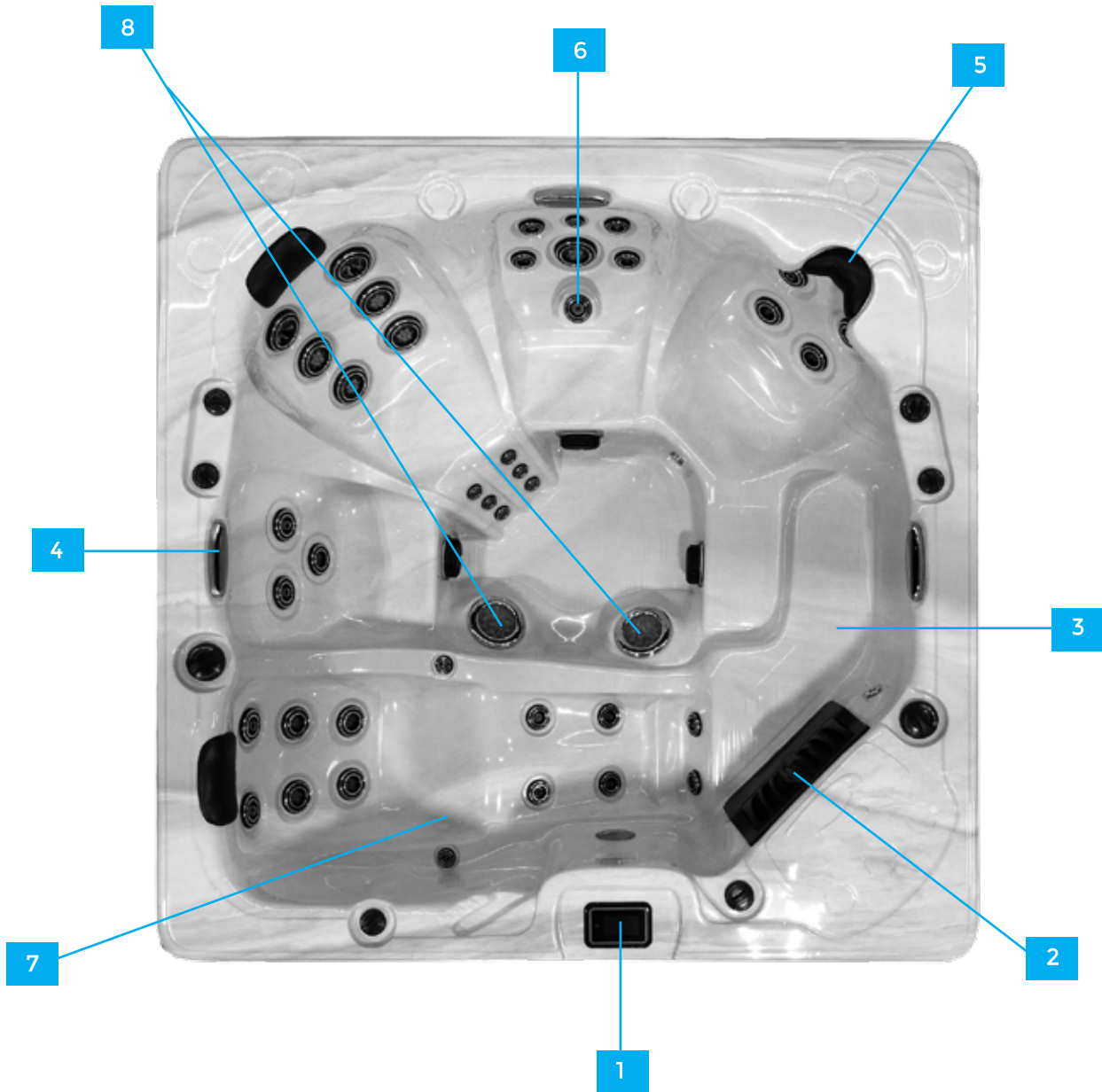
The **Dynasty Spas Modernized Appliance Efficiency Laboratory (M.A.E. Lab)** is where we apply rigorous test procedures to each of our models. With high precision instruments, we verify that our spas not only maintain a consistent temperature, but also meet the energy requirements stated by the ANSI/APSP 2019 standards, as well as **California Title 20**.

All models tested in the M.A.E. Lab are first verified for fit and finish. Water volume is then recorded. Once the spa has been filled, we allow the spa to heat to specified temperature. A stabilization test (minimum 4 hours) is then performed with spa cover installed to determine that the spa can maintain the appropriate temperature. After it is determined that the spa can maintain set temperature, we begin the official energy test (72 hours). Upon completion, test data is verified then uploaded to the MAEDBS database. The Dynasty Spas Modernized Efficiency Lab is:

- Fully insulated and temperature controlled
- ISO 17025 compliant
- Uses high precision instruments that are calibrated at regular intervals
- Meets ANSI/APSP testing specifications
- Meets California Title 20 specification



## ANATOMY OF A DYNASTY SPA



1. Topside Control

2. Built-in Filtration Cartridge

3. Safe Entrance Steps and Child Seat

4. Waterfall Features on Select Models

5. Trapezius and Cervical Station.

6. Sciatic Nerve

7. Zero Gravity Lounge Chair

8. Reflexology Diffuser

**The number of jets is not as important as their location.**

# DYNASTY SPAS HYDROTHERAPY INTERCHANGEABLE JET SYSTEM

A targeted, soothing & effective massage. Get deep relief of stress & tensions that will put balance and wellness in your life.

Adjustable, interchangeable jets allow you to customize your massage through **6 Special Stations** that will get you relaxed & feeling better.

  <b>DIRECTIONAL STATION</b> Relieves muscle tension and improves blood circulation its spiral action provides a vigorous massage.	  <b>TUINA STATION</b> Direct a vigorous water flow along with the meridian lines. Inspired by Chinese massage. (Offered on certain models only)	  <b>VORTEX STATION</b> Stimulated the body's smallest points of energy.	  <b>FOOT MASSAGE</b> A large concentration of nerve endings are located in the feet. Enjoy the soothing effect of a foot massage, whoever you choose to sit in your hot tub.	  <b>ROTARY SHOWER</b> Powerful jets that you can place your legs over for a strong massage effect they are great for post recovery after a strenuous activity.	  <b>SHIATSU STATION</b> Much like a finger, hand and elbow shiatsu massage, this station can offer both a soft, relaxing flow or a vigorous pulsating purpose.
---	---	---	--	--	--

## DYNASTY IS THE PIONEER

of the **REVERSE PULL NECK JET** TECHNOLOGY  
(available on select spas molds)

### THE ULTIMATE SHOULDER & NECK MASSAGE

for a deep relief that will melt away tensions and stress in minutes.



# Balneotherapy

in the comfort of your own yard.

20  
min  
3X  
week

20 minutes a day. 3 Times a week. That's all.

To quickly feel the benefits of balneotherapy on your health, soak in your spa for 30 minutes a day, 3 times a week. By the combining your seasons with a healthy diet and physical activity, you will quickly see noticeable positive effects on your daily well-being.



## **BALNEOTHERAPY**

Taking a spa is enjoyable all year round, but it's even more so in the winter. There is nothing better than enjoying warm and relaxing water to forget the inconveniences of the cold season and appreciate its beauty,

1. Helps with relaxation and stress management
2. Relieves backaches and lumbar pain
3. Soothes joint and muscle pain
4. Promotes sleep
5. Improves cardiovascular health

All of these benefits, and many more, are now well documented. Find out more in the following pages.





## RELAXATION AND STRESS MANAGEMENT

Did you know that to manage stress, medical students from many universities are required to take meditation classes? Moments of relaxation in the comfort of a spa produce physiological effects comparable to these meditative sessions: the mere act of soaking in hot water can help manage stress, and even improve cognitive performance.

Spending time in a spa influences brain functions, generating physiological effects comparable to those brought on by meditation. This is what a study published in the International Journal of Aquatic Research and Education suggests<sup>1</sup>. It reports that a 20-minute immersion in hot water causes the autonomic nervous system to adjust, just as meditation does. This reaction promotes short-term memory, increases attention span, and improves brain functions that allow for the proper processing of information.

The mere fact of being immersed in a spa could influence the sympathovagal balance of the body. In short, this activity leads to a decrease in anxiety and stress, and generates positive ideas while lowering blood pressure and cardiac stress.





## **BACKACHES AND LUMBAR PAIN**

The lower back and pelvis perform a colossal task: they alone support two thirds of our body weight. When your back hurts, the whole body is affected. According to data collected by United States Statistics 75% to 80% of people will experience at least one serious back pain episode or other back aches during their lifetime. As part of a study published in the *Journal of Rheumatology*<sup>4</sup>, patients with chronic back pain combined sessions in hot water basins with their medication. After 3 weeks, their pain had decreased significantly, and their backs had become more flexible.

After 6 months, these patients were able to reduce their medication intake. With its heat and massage jets, a spa can thus become a very effective everyday back pain management method.

American doctors from the Spine-Health.com organization claim that spending time in a spa is recommended for controlling back pain. It promotes blood circulation to the muscles and increases overall body flexibility.





## **JOINT AND MUSCLE PAIN**

Many sportsmen and outdoor enthusiasts will tell you that after physical exertion, a spa is a great reward. Beyond relaxation, the soothing effects of a spa can make a major difference when pain remains persistent. There is evidence that, in addition to soothing aching muscles, hot water and massage jets also have the potential to soothe some chronic pain, such as pain caused by osteoarthritis.

According to a study published in the *Journal of Physical Therapy Science*<sup>6</sup>, patients experienced a significant easing of their osteoarthritic knee pain after spending time in a spa. The combination of immersion in hot water and hydro massage helps trigger calming mechanisms for joint pain.

Immersion in a spa may also soothe the pain caused by physical exertion. According to the Rochester University Medical Center, immersion in hot water dilates blood vessels, increases the supply of oxygen and nutrients, and thus relaxes muscles, ligaments and tendons. Moreover, according to a study by the *European Journal of Applied Physiology*, massage jets located in the spa could facilitate recovery after an intense physical effort, by releasing toxins from the muscles into the blood stream.



## PRESSURE POINTS OF BALNEOTHERAPY JETS

1. Headaches
2. Shoulders and Rotators
3. Elbow Injuries
4. Lower-back pain and Menstrual discomfort
5. Sciatic Pain
6. Carpal Tunnel Syndrome
7. Knee Ache
8. Calf Pain and Blood Circulation Issues.
9. Heel and Foot Arch Pain

## POSITIVE EFFECTS ON SLEEP PATTERNS

Sleeping well is not a luxury: sleep disorders have a major impact on everyday health. According to an article in the Canadian Sleep Society's journal *Insomnia Round*, sleeping less than 6 hours a night can affect the brain's ability to plan, organize, be attentive, and develop strategies. About 40% of North Americans suffer from insomnia symptoms at different times of their lives. Spending time in a spa can be just what is needed. In addition to relaxation, there is evidence that an early evening spa session improves the length and quality of sleep.

In a study published in the scientific journal *Sleep*, researchers have found that immersion in hot water for 30 minutes, a few hours before going to bed, contributes to better quality sleep. Body temperature increases in the spa, then slowly decreases in the evening. This regulation helps to fall asleep faster, but also increases the quality of slow/deep sleep during the night, which are critical periods when the body regenerates. Therefore, in order to sleep well, a good soak in a spa is recommended. In addition to promoting relaxation, it can also improve the length and quality of sleep.

Adults need to sleep on average 8 hours per night. Besides fatigue and sleepiness, extended lack of sleep is associated with serious health problems such as depression and weight gain.



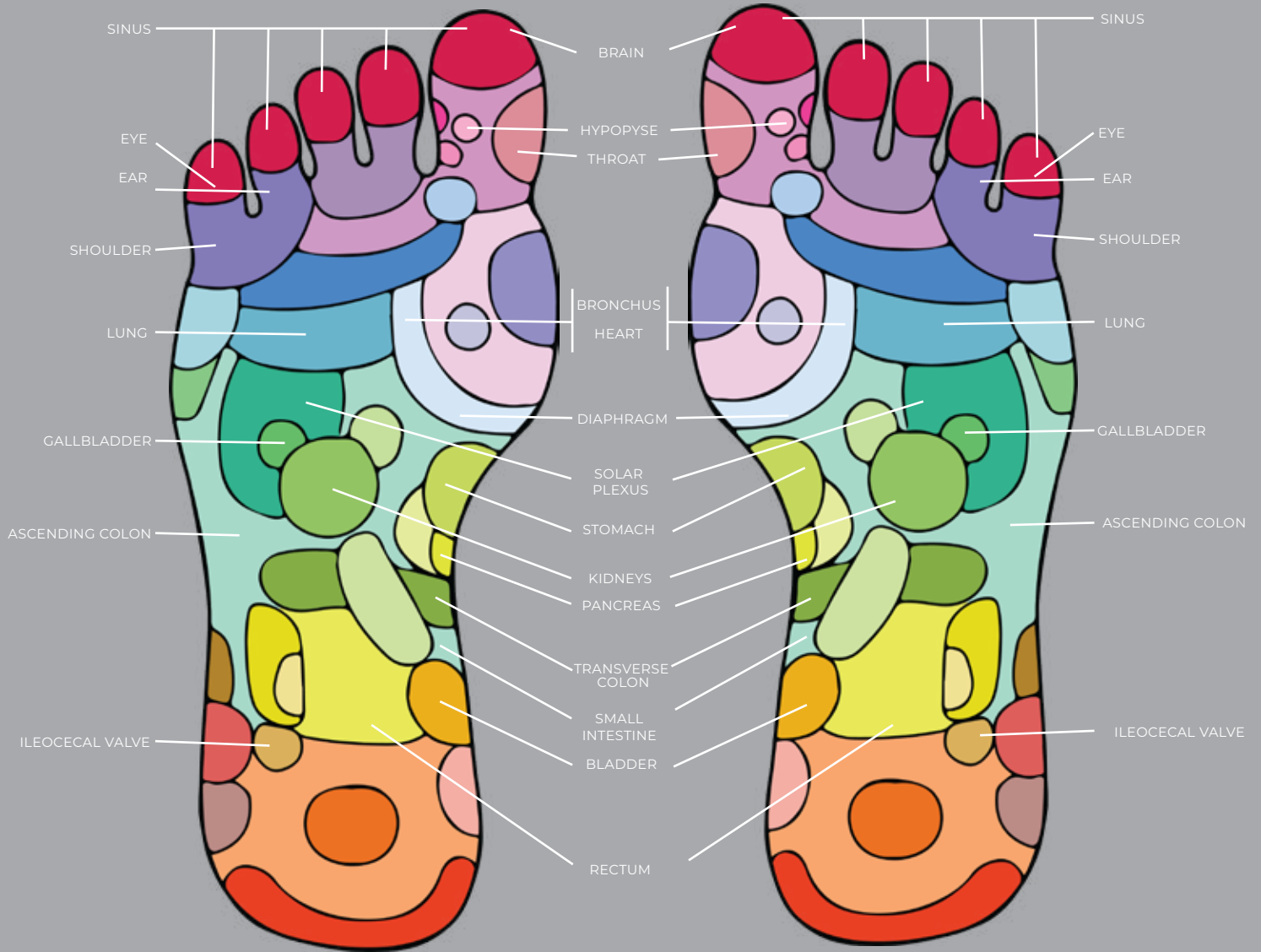


## CARDIOVASCULAR HEALTH

Nothing can replace a healthy and active lifestyle, but sometimes health issues or overly busy days can put a considerable strain on the body, and moments spent relaxing in a spa can be beneficial. They may even have positive effects on your cardiovascular health (with prior approval from your doctor) if you have heart problems or suffer from high blood pressure. According to Dr. Thomas G. Allison, taking a relaxing break in the warm water of a spa may indeed be good for your heart, as the spa may simulate some aspects of exercise without the associated heart stress. A 10-minute hot bath may even be beneficial for people suffering from congestive heart failure.

In terms of heart health, sitting in hot water may also offer some of the same benefits as meditation. As part of a recently published study in the International Journal of Aquatic Research and Education, this phenomenon has been documented in participants who received 24-minute hot water sessions. The findings of this study show direct effects on the sympathovagal balance when the body is immersed in hot water. Specifically, in addition to the benefits to brain activity, this phenomenon may bring a decrease in blood pressure, cardiac irritability, and anxiety.

# REFLEX ZONE MAP



**RIGHT FOOT**

**LEFT FOOT**

## **THE BENEFITS OF REFLEXOLOGY**

In traditional Chinese medicine, reflexology has the ability to prevent a lot of health-related problems. The beneficial effects of jet impulses on the plantar surface of the foot are attributable to the stimulation of specific reflex zones.

In reflexology, the foot is divided into numerous reflex zones, each corresponding to a specific part of the human body. Reflexology consists of manipulating these zones to locate and alleviate tension and dysfunction, thus restoring the body's natural balance.

# Vacation Collection

SPA MODELS





## THE VACATION COLLECTION ARE EQUIPPED WITH THE FOLLOWING STANDARD FEATURES

K.506 Digital Controls  
Underwater LED Light  
Air / Water Multi - Jets  
Padded Headrests  
Ozonator System  
\*VGB Compliant Intake  
Energy Efficient Heater  
Ecological RMAX® Insulation  
Lucite® Acrylic Shell  
Maintenance Free Skirting  
Full Wrap-Around ABS Bottom  
Insulated Cover



# *Bimini*

## VACATION COLLECTION





## **BIMINI Lounger**

72" x 72" x 33.5"

160 Gallons

K506 Digital Topside

Cascading Waterfall

LED Underwater Light

Padded Headrests

Choice of

Electrical 110 v / 20 a

with 1 - 3.0 Pump

Electrical 220 v / 60 a

with 1 - 6.0 Pump

Filtration System Size 50 ft<sup>2</sup>

Maintenance Free Skirting

RMAX<sup>®</sup> Insulation

Weight: Dry / Filled (approx.)

350 lbs. / 1,390 lbs



*"My husband and I absolutely love our Bimini spa. It's the perfect size for just the two of us and looks quite striking in our backyard. I suffer from rheumatoid arthritis and fibromyalgia, and after only a few weeks, I noticed a significant decrease in pain and stiffness. I would definitely recommend Dynasty to anyone looking for relief and relaxation!"*

# Treasure Cay

VACATION COLLECTION





## TREASURE CAY Lounger

- 78" x 78" x 36"
- 280 Gallons
- K.506 Digital Topside
- Cascading Waterfall
- LED Underwater Light
- Padded Headrests
- Choice of
  - Electrical 110 v / 20 a
    - 1 - 3.0 Pump
  - Electrical 220 v / 60 a
    - 1 - 6.0 Pump
- Filtration System Size 50 ft<sup>2</sup>
- Maintenance Free Skirting
- RMAX<sup>®</sup> Insulation
- Weight: Dry / Filled (approx.)  
600 lbs. / 3,160 lbs.



*We purchased a Dynasty Spa a few months ago and we are totally in love with it! This hot tub has been an absolute pleasure to use from day one. It's providing much-needed relief from sore joints and muscles, and one of the biggest surprises is how many nights a week we actually use it. We are definitely getting our money's worth. Thank you Dynasty Spas!*

# Sunset Cove

VACATION COLLECTION





**36**  
JETS

**3**

## **SUNSET COVE** Lounger

60" x 82.5" x 33.5"  
160 Gallons  
K.506 Digital Topside  
Fountain Jets  
LED Underwater Light  
Padded Headrests  
Electrical 220 v / 60 a  
1 - 6.0 Pump  
Filtration System Size 50 ft<sup>2</sup>  
Maintenance Free Skirting  
RMAX<sup>®</sup> Insulation  
Weight: Dry / Filled (approx.)  
350 lbs. / 2,150 lbs.



*Our Dynasty Spa is the most perfect size, we have a extremely small backyard and the Sunset Cove is the perfect size to make our evenings and weekends more relaxing.*

# Tranquility Harbor

VACATION COLLECTION





Reverse  
Pull Neck  
Jets



42  
JETS

7

## TRANQUILITY HARBOR Bench

- 82" x 82" x 39"
- 295 Gallons
- K.506 Digital Topside
- Cascading Waterfall
- Reverse Pull Neck Jets
- LED Underwater Lighting
- Padded Headrests
- Electrical 220 v / 60 a
- 2 - 6.0 Pumps
- Filtration System Size 50 ft<sup>2</sup>
- Maintenance Free Skirting
- RMAX<sup>®</sup> Insulation
- Weight: Dry / Filled (approx.)  
675 lbs. / 3,475 lbs.

★★★★

*This may be the best purchase my wife and I have ever made. It's great for relaxing at the end of the day, spending screen-free time with the kids, and it's big enough to entertain guests comfortably. We look forward to the weekends when we invite our friends over, fire up the grill, and spend the afternoon relaxing. This spa definitely lives up to its name.*

# Serenity Cove

VACATION COLLECTION





42  
JETS

5

## SERENITY COVE Lounger

82" x 82" x 39"  
295 Gallons  
K.506 Digital Topside  
Cascading Waterfall  
Reverse Pull Neck Jets  
LED Underwater Lighting  
Padded Headrests  
Electrical 220 v / 60 a  
2 - 6.0 Pumps  
Filtration System Size 50 ft<sup>2</sup>  
Maintenance Free Skirting  
RMAX<sup>®</sup> Insulation  
Weight: Dry / Filled (approx.)  
675 lbs. / 3,475 lbs.



*We have had our Serenity Cove for almost two years, and we couldn't be happier. We were initially worried about the amount of upkeep required, but Dynasty's ozonator and filtration system take care of all the work. All that's left is for us to relax and enjoy our spa with minimal upkeep on our end. Our only regret is that we didn't buy it earlier!*

# Ocean Breeze

VACATION COLLECTION





**42**  
JETS

**7**

### **OCEAN BREEZE Bench**

- 92" x 92" x 39"
- 425 Gallons
- K.506 Digital Topside
- 4 Water Fountains
- Reverse Pull Neck Jets
- LED Underwater Lighting
- Padded Headrests
- Electrical 220 v / 60 a
- 2 - 6.0 Pumps
- Filtration System Size 50 ft<sup>2</sup>
- Maintenance Free Skirting
- RMAX<sup>®</sup> Insulation
- Weight: Dry / Filled (approx.)  
900 lbs. / 4,570 lbs.



*The controls are simple, and the settings allow us to keep our spa hot and ready to use all year round. We had family fly in for Christmas last year, and it was absolutely brilliant to watch the kids rush across the snow-covered deck and hop into the steaming hot tub. The worst thing about using the hot tub in the winter is that you have to eventually get out!*

# Cabana Bay

VACATION COLLECTION





## CABANA BAY Lounger

92" x 92" x 39"

425 Gallons

K.506 Digital Topside

Cascading Waterfall

Reverse Pull Neck Jets

LED Underwater Lighting

Padded Headrests

Electrical 220 v / 60 a

2 - 6.0 Pumps

Filtration System Size 50 ft<sup>2</sup>

Maintenance Free Skirting

RMAX<sup>®</sup> Insulation

Weight: Dry / Filled (approx.)

900 lbs. / 4,370 lbs.



*Our experience with Dynasty Spa has been and continues to be excellent. Every step of the process from purchase to delivery and installation has been professional and so easy! Our nightly soaks are the break we didn't even know we needed! The options we chose made the experience absolutely wonderful. I love being able to start up the tub from my cell phone so that by the time I'm ready to soak, it's ready and waiting for me*

# Oasis Collection

SPA MODELS





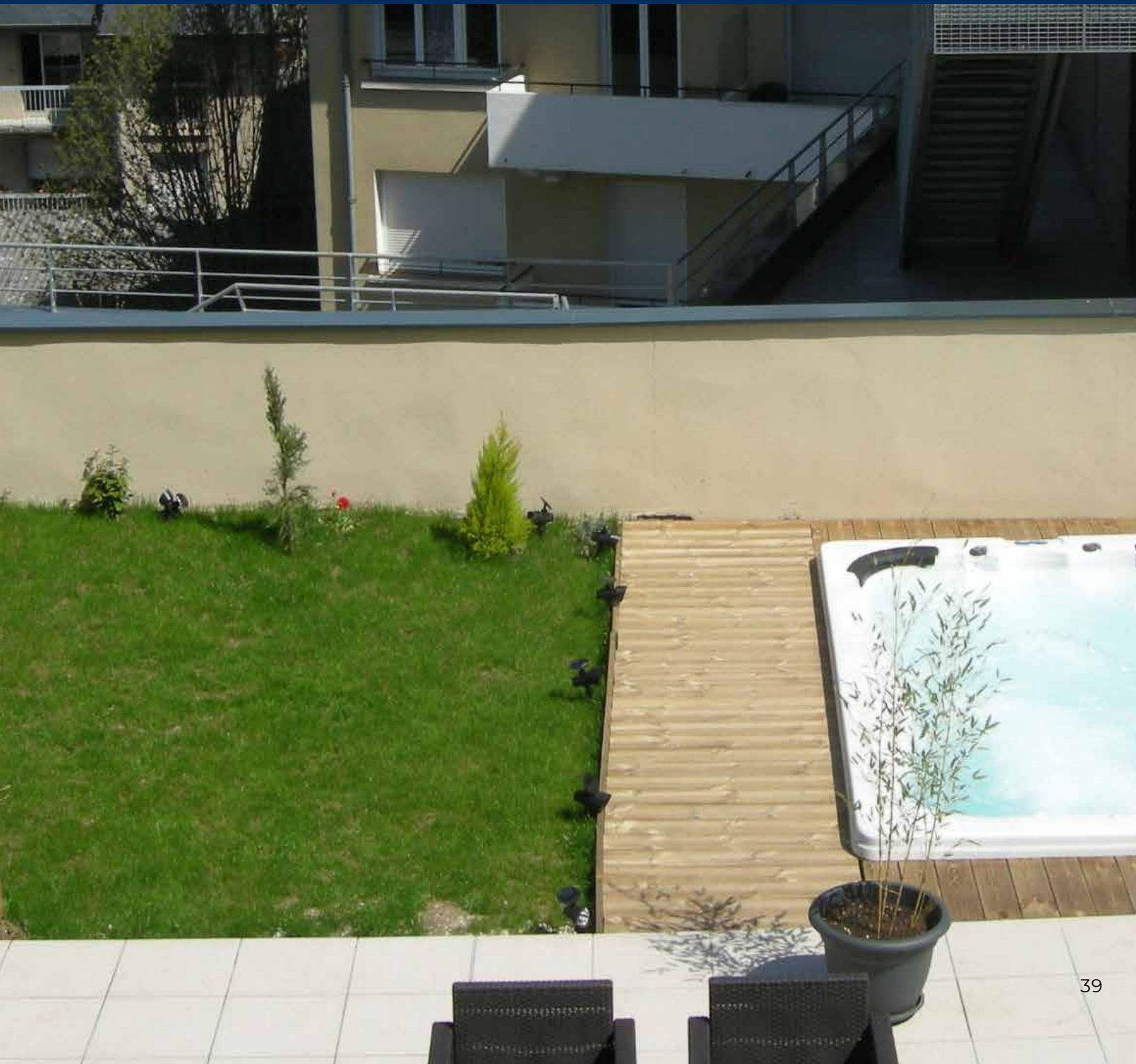
## THE OASIS COLLECTION ARE EQUIPPED WITH THE FOLLOWING STANDARD FEATURES

- K.1000 Digital Topside
- LED Underwater Lighting
- LED Illuminated Fountains (If equipped)
- LED Illuminated Waterfalls (If equipped)
- LED Illuminated Diversers
- Air / Water Multi - Jets
- Padded Headrests
- Ozonator System
- \*VGB Compliant Intake
- Energy Efficient Heater
- Ecological RMAX® Insulation
- Lucite® Acrylic Shell
- Maintenance Free Skirting
- Full Wrap-Around ABS Bottom
- Insulated Cover



# Twin Palms

OASIS COLLECTION





## TWIN PALMS Dual Lounger

60" x 82.5" x 30"

180 Gallons

K.1000 Digital Topside

LED Top Rail Lighting

LED Illuminated Diverter

LED Underwater Light

LED Corner Light

Padded Headrests

Electrical 220 v / 60 a

2 - 6.0 Pumps

Filtration System Size 50 ft<sup>2</sup>

Maintenance Free Skirting

RMAX<sup>®</sup> Insulation

Weight: Dry / Filled (approx.)

375 lbs. / 2,175 lbs.



*My husband and I are in our 50s and remain very physically active. Unfortunately, our daytime adventures result in nighttime muscle aches and joint pain. The Arizona weather is perfect for year-round use of our spa, as it gets quite cool in the mornings and evenings. Dynasty has the best product, as well as the customer service and support to match. Thank you!!*

# Nassau Royale

OASIS COLLECTION





73  
JETS

5

WHITE JET  
OPTION  
AVAILABLE

## NASSAU ROYALE Lounger

82" x 82" x 39"

295 Gallons

K.1000 Digital Topside

LED Illuminated Waterfall

LED Top Rail Lighting

LED Illuminated Diverter

LED Underwater Light

LED Corner Light

Reverse Pull Neck Jets

Electrical 220 v / 60 a

2 - 7.0 Pumps

Filtration System Size 100 ft<sup>2</sup>

Maintenance Free Skirting

RMAX<sup>®</sup> Insulation

Weight: Dry / Filled (approx.)

750 lbs. / 3,935 lbs.



*We moved last year and sadly had to leave our Dynasty tub behind. As unfortunate as this was, we knew we wanted another Dynasty tub, so we used the opportunity to upgrade to a six-person tub to be able to entertain guests more comfortably. Knowing that our tub will be covered by Dynasty's 20- year warranty made the decision all that much easier. I know my family and I will enjoy this spa for many years to come.*

# Caribbean Breeze

OASIS COLLECTION





**73**  
JETS

**7**

WHITE JET  
OPTION  
AVAILABLE

## CARIBBEAN BREEZE Bench

82" x 82" x 39"

295 Gallons

K.1000 Digital Topside

LED Top Rail Lighting

LED Illuminated Waterfall

LED Illuminated Fountain Jets

LED Illuminated Diversers

LED Underwater Light

LED Corner Light

Reverse Pull Neck Jets

Electrical 220 v / 60 a

2 - 7.0 Pumps

Illuminated Weir Door

Filtration System Size 100 ft<sup>2</sup>

Maintenance Free Skirting

RMAX® Insulation

Weight: Dry / Filled (approx.)

750 lbs. / 3,935 lbs.

★★★★

*Having four kids means shouts from the vans' backseat of "he's on my side" or "I need more room." Our Caribbean Breeze spa provides a welcome respite from this stress. There's enough seating for everyone to have their own space, and plenty of room in the footwell for everyone to stretch out their legs, even for all six of us at once. After the kids go to sleep, Mom and Dad get to enjoy a quiet, peaceful soak. We love Dynasty Spas!*

# Coconut Bay II & III

OASIS COLLECTION





## COCONUT BAY II/III LOUNGER

92" x 92" x 39"

425 Gallons

K.1000 Digital Topside

LED Top Rail Lighting

LED Illuminated Waterfalls

LED Illuminated Diversers

LED Illuminated Weir Door

LED Underwater Lighting

LED Corner Lights

Reverse Pull Neck Jets

Padded Headrests

Electrical 220 v / 60 a

Coconut Bay II - 2 - 7.0 Pumps

Coconut Bay III - 3 - 6.0 Pumps

Filtration System Size 100 ft<sup>2</sup>

Maintenance Free Skirting

Weight: Dry / Filled (approx.)

900 lbs. / 4,300 lbs.



*We took forever making a decision on a company and model, but I'm so glad we decided on this Coconut Bay from Dynasty. I love the way the LEDs light up the tub at night, and being able control the colors and brightness of each section with the In.Mix controls is so awesome! Relaxing in our tub at night, with the lights all on, the waterfalls flowing, and the stereo playing is my safe haven from the stress of the day. 10/10 would recommend*

# Pleasure Cove II &

OASIS COLLECTION



# III



80  
JETS

5

WHITE JET  
OPTION  
AVAILABLE

## PLEASURE COVE II/III Dual Lounger

92" x 92" x 39"

425 Gallons

K.1000 Digital Topside

LED Top Rail Lighting

LED Illuminated Waterfalls

LED Illuminated Diverters

LED Illuminated Weir Door

LED Underwater Lighting

LED Corner Lights

Reverse Pull Neck Jets

Padded Headrests

Electrical 220 v / 60 a

2 - 7.0 Pumps Pleasure Cove II

3 - 7.0 Pumps Pleasure Cove III

Filtration System Size 100 ft<sup>2</sup>

Maintenance Free Skirting

Weight: Dry / Filled (approx.)

900 lbs. / 4,300 lbs.

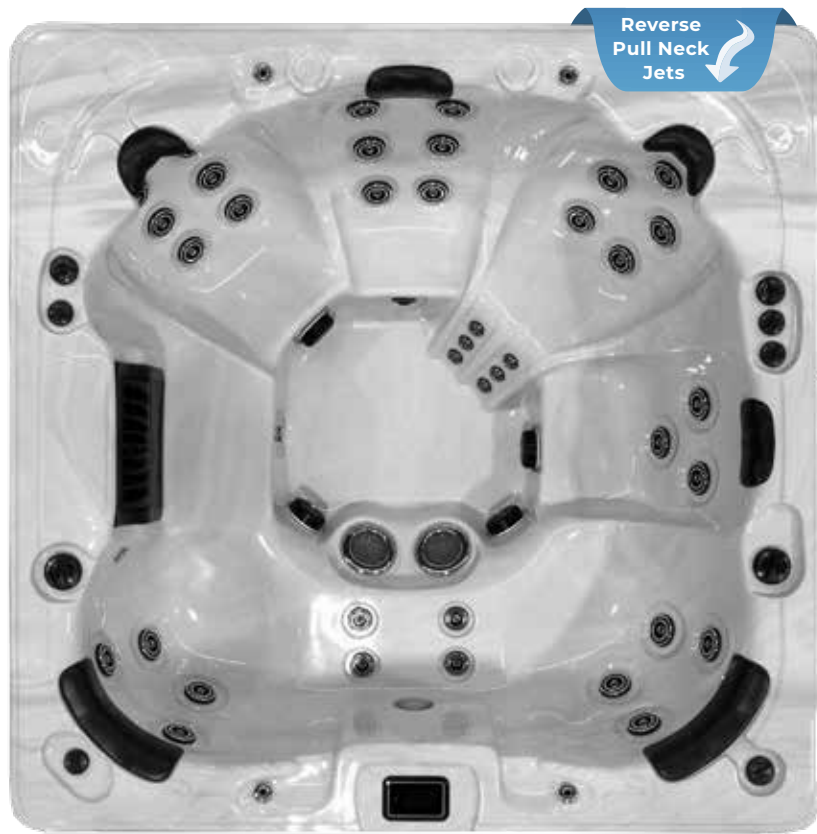


*My husband is a roofer, and after a long day at work, he loves to sit in the corner seat to enjoy a shoulder massage with the jets turned on full blast. The stereo sounds great, even with the pumps all turned up and the tub full of people. The LED-lit underwater jets light up the tub so well, and being able to change the color of the lights is too much fun. Thanks Dynasty Spas for lighting up our life!*

# *Palm Island II &*

**OASIS COLLECTION**





76  
JETS

7

WHITE JET  
OPTION  
AVAILABLE

### PALM ISLAND II/III Bench

- 92" x 92" x 39"
- 425 Gallons
- K.1000 Digital Topside
- LED Top Rail Lighting
- LED Illuminated Waterfalls
- LED Illuminated Diversers
- LED Illuminated Weir Door
- LED Underwater Lighting
- LED Corner Lights
- Reverse Pull Neck Jets
- Padded Headrests
- Electrical 220 v / 60 a
- 2 - 7.0 Pumps Palm Island II
- 3 - 6.0 Pumps Palm Island III
- Filtration System Size 100 ft<sup>2</sup>
- Maintenance Free Skirting
- Weight: Dry / Filled (approx.)  
900 lbs. / 4,300 lbs.



*My wife and I have discussed purchasing a hot tub for years and have been shopping around to check out the different spa styles and pricing. As soon as we started looking at the stylish tubs from Dynasty Spas, we knew we were finally in the right place. Our Palm Island looks so striking at night when fully lit with the fountains going...we couldn't be happier.*

# Paradise Bay II &

OASIS COLLECTION





83  
JETS

5

WHITE JET  
OPTION  
AVAILABLE

## PALM ISLAND II/III Bench

92" x 102" x 39"

550 Gallons

K.1000 Digital Topside

LED Toprail Lighting

LED Illuminated Waterfalls

LED Illuminated Diversers

LED Illuminated Weir Door

LED Underwater Lighting

LED Corner Lights

Reverse Pull Neck Jets

Padded Headrests

Electrical 220 v / 60 a

2 - 7.0 Pumps Paradise Bay II

3 - 6.0 Pumps Paradise Bay III

Filtration System Size 100 ft<sup>2</sup>

Maintenance Free Skirting

Weight: Dry / Filled (approx.)

1000 lbs. / 4,800 lbs.

★★★★★

*Our Paradise Bay is just that – PARADISE! It has surpassed our expectations and then some! It's been so easy to maintain, and the kids love using it as well. It's always at the center of our parties and backyard gatherings, which we host even more frequently since purchasing our tub! It's been therapeutic both physically and mentally, and we recommend Dynasty Spas to all of our friends!*

# Luxury Collection

SPA MODELS





## THE LUXURY COLLECTION ARE EQUIPPED WITH THE FOLLOWING STANDARD FEATURES

Sleek Sculptured Acrylic  
Elite 2 Toned Skirting  
in.Mix LED Lighting  
18 Inch Illuminated Waterfall  
Illuminated Everywhere  
Illuminated Jewels  
Illuminated Diverter  
Illuminated Pillows  
Illuminated Master Massage  
Illuminated Corners  
K.1000 Standard  
(3) 6.0bhp Pumps  
Ozonator System  
\*VGB Compliant Intake  
Energy Efficient Heater  
Ecological RMAX® Insulation  
Insulated Covers

# 30th Anniversary L

LUXURY COLLECTION





## 30th Anniversary SL Lounger

- 92" x 92" x 39"
- 425 Gallons
- in.Mix LED Lighting
- 18 Inch Illuminated Waterfall
- Illuminated Everywhere
- Illuminated Jewels
- Illuminated Diversers
- Illuminated Pillows
- Illuminated Master Massage
- Illuminated Corners
- Sleek Sculptured Acrylic
- Elite 2 Toned Skirting
- Electrical 220 v / 60 a
- 3 - 6.0 Pumps
- Filtration System Size 100 ft<sup>2</sup>
- Weight: Dry / Filled (approx.)
- 1,000 lbs. / 4,800 lbs.



*Our Paradise Bay is just that – PARADISE! It has surpassed our expectations and then some! It's been so easy to maintain, and the kids love using it as well. It's always at the center of our parties and backyard gatherings, which we host even more frequently since purchasing our tub! It's been therapeutic both physically and mentally, and we recommend Dynasty Spas to all of our friends!*

# Family Collection

SPA MODELS





**THE FAMILY COLLECTION ARE  
EQUIPPED WITH THE  
FOLLOWING STANDARD FEATURES**

K.1000 Digital Topside  
LED Underwater Light  
Illuminated Fountains  
Air / Water Multi - Jets  
Padded Headrests  
Ozonator System  
\*VGB Compliant Intake  
Energy Efficient Heater  
Ecological RMAX® Insulation  
Lucite® Sterling Marble Acrylic Shell  
Corner Skirt Lighting  
Maintenance Free Skirting  
Insulated Covers



# 11' Family Island Oasis SL

## Family Collection



63  
JETS



### 11' Family Island Oasis SINGLE Lounger

92" x 132" x 38"  
550 Gallons  
Waterfalls  
Reverse Pull Neck jets  
LED Underwater lighting  
Padded Headrests  
Corner Skirt Lighting  
Electrical 220 v / 60 a  
2 - 7.0bhp Pumps  
Filtration System Size 100 ft<sup>2</sup>  
Weight: Dry / Filled (approx.)  
2,727 lbs. / 6,527 lbs.

# 11' Family Island Oasis

## Family Collection



63  
JETS



### 11' Family Island Oasis DUAL Lounger

92" x 132" x 38"  
516 Gallons  
Waterfalls  
Reverse Pull Neck jets  
LED Underwater lighting  
Padded Headrests  
Corner Skirt Lighting  
Electrical 220 v / 60 a  
2 - 7.0bhp Pumps  
Filtration System Size 100 ft<sup>2</sup>  
Weight: Dry / Filled (approx.)  
1,727 lbs. / 5,855 lbs.

Reverse  
Pull Neck  
Jets

Reverse  
Pull Neck  
Jets

# 13' Aquex Party

## Family Collection



29  
JETS

11

### 13' AQUEX PARTY Bench

92" x 160" x 51"  
1,100 Gallons  
LED Top Rail  
LED Illuminated Water Fountains  
LED Illuminated River Jets  
LED Underwater Lighting  
Padded Headrests  
Electrical 220 v/ 60 a  
2 - 4.0bhp Pumps  
Filtration System Size 100 ft<sup>2</sup>  
2 Single Fold Covers  
Weight: Dry / Filled (approx.)  
2,200 lbs. / 11,000 lbs.

# *Dynasty Spas*

**SWIM SPA COLLECTION**





## **DYNASTY SWIM SPAS ARE EQUIPPED WITH THE FOLLOWING COMPONENTS**

K.1000 Digital Controls  
LED Top Rail Lighting  
LED Illuminated River Jets  
LED Illuminated Fountain Jets  
LED Underwater Lights  
Air/Water Multi-Jets  
Stainless Steel Grab Bars  
Ozonator System  
\*VGB Compliant Intake  
Energy Efficient Heater  
Lucite® Acrylic Shell  
Maintenance Free Skirting  
Ecological RMAX® Insulation  
Insulated Covers

# 13' Aquex Pro

## Swim Spa



10  
JETS

4

### 13' AQUEX PRO

92" x 160" x 54"  
1,530 Gallons  
LED Top Rail Lighting  
LED Illuminated River Jets  
LED Illuminated Fountain Jets  
LED Illuminated Jets  
Padded Headrests  
Electrical 220 v / 60 a  
2 - 5.0bhp Pumps  
1 - 7.0bhp Pump  
Filtration System Size 100 ft<sup>2</sup>  
Exercise / Rowing & Swim Tether  
Weight: Dry / Filled (approx.)  
2,100 lbs. / 14,500 lbs.

# 13' Aquex Pro Plus

## Swim Spa



13' Pro  
Swim Spa  
with 17' Pro  
Specifications  
and Features



### 13' AQUEX PRO PLUS

- 92" x 160" x 54"
- 1,530 Gallons
- LED Top Rail Lighting
- LED Illuminated River Jets
- LED Illuminated Fountain Jets
- LED Illuminated Jets
- Padded Headrests
- In.Stream Audio System
- w/4 - 4" Marine Grade Speakers
- Electrical 220 v / 60 a
- 3 - 5.0bhp Pumps
- 1 - 7.0bhp Pump
- Filtration System Size 100 ft<sup>2</sup>
- Exercise / Rowing & Swim Tether
- Swim Coach - Multi Programmable Workout
- Weight: Dry / Filled (approx.)
- 2,100 lbs. / 15,200 lbs.



# 16' Aquex Trainer

## Swim Spa



29  
JETS

4

AUDIO

### 16' AQUEX TRAINER Lounger

92" x 192" x 60"

1,850 Gallons

LED Top Rail Lighting

LED Illuminated River Jets

LED Illuminated Fountain Jets

LED Illuminated Jets

In.Stream Audio System

w/4 - 4" Marine Grade Speakers

Electrical 220 v / 60 a

3 - 5.0bhp Pumps

1 - 7.0bhp Pump

Filtration System Size 100 ft<sup>2</sup>

Exercise / Rowing & Swim Tether

Swim Coach - Multi Programmable Workout

Weight: Dry / Filled (approx.)

2,700 lbs. /17,300 lbs.



# 17' Aquex Pro Plus

## Swim Spa



30  
JETS

5

AUDIO

### 17' AQUEX PRO PLUS Lounger

92" x 199" x 55"

1,850 Gallons

LED Top Rail Lighting

LED Illuminated River Jets

LED Illuminated Fountain Jets

LED Illuminated Jets

Reverse Pull Neck jets

In.Stream Audio System

w/4 - 4" Marine Grade Speakers

Electrical 220 v / 60 a

3 - 5.0bhp Pumps

1 - 7.0bhp Pump

Filtration System Size 100 ft<sup>2</sup>

Exercise / Rowing & Swim Tether

Swim Coach - Multi Programmable Workout

Weight: Dry / Filled (approx.)

2,700 lbs. / 17,500 lbs.

Reverse  
Pull Neck  
Jets



# 19' Aquex Pro Plus

## Swim Spa



39  
JETS

6

AUDIO

### 19' AQUEX DUAL PRO Bench

92" x 224" x 55"

Gallons: 1,500 Swim / 270 Spa

LED Top Rail Lighting

LED Illuminated River Jets

LED Illuminated Fountain Jets

LED Illuminated Jets

Reverse Pull Neck jets

In.Stream Audio System

w/4 - 4" Marine Grade Speakers

Electrical 220 v / 60 a

3 - 5.0bhp Pumps

2 - 7.0bhp Pumps

Filtration System Size 100 ft<sup>2</sup>

Exercise / Rowing & Swim Tether

Swim Coach - Multi Programmable Workout

Weight: Dry / Filled (approx.)

3,500 lbs. / 17,700 lbs,

Reverse  
Pull Neck  
Jets





## SWIM COACH™ - PROGRAMMABLE WORK-OUT SYSTEM



The perfect balance of art and technology now with an Olympic level training program for swim spas. With its swim spa training program, in.k1000+ can transform any swim spa into the ultimate training machine. Directly on the keypad, training sessions can be customized by setting flow intensities, durations and color indicators. Pre-sets Lap, Transition, Cardio and Power drills can also be selected and customized to match any training needs. in.k1000+ can now control multiple 2 speed pumps and synchronize the jets to create the wide selection of water stream strengths a swimmer needs for serious training.



Select drills, set durations, intensities and more with the touch of a finger on an interface designed for swimmers.



Many parameters can be configured to fit your training habits; warm up, cool down, step time, preparation time and lighting.



You can customize your training session. It's as easy as dragging your finger on the screen to draw the pattern of your choice and save it under your name.

# *Dynasty Spas*

## FEATURES AND BENEFITS





## STANDARD FEATURES, OPTIONAL FEATURES AND BENEFITS

Digital Controls

LED Lights

Air/Water Multi-Jets

Ozonator System

\*VGB Compliant Intake

Lucite® Acrylic Shell

Maintenance Free Skirting

Ecological RMAX® Insulation

Insulated Cover

Energy Efficient Heater

Padded Headrests

Full Wrap-Around ABS Bottom



# ELEGANT AND STRONG

Dynasty Spas uses the best of the best Lucites® timeless acrylic with stunning solids and complex patterns offer a luxurious finish to any vision of relaxation. Lucite® Spa continuous cast acrylic sheet is the preferred choice of manufacturers worldwide.

Dynasty Spas offers a variety of polymer cabinet color options - designed to fit any decor. The cabinet also provides an attractive look, texture, and performance. The maintenance free cabinetry is extremely durable also moisture and impact resistant, therefore it doesn't crack, peel, or fade. Dynasty Spas custom rounded corners and removable panels allows for access to all the areas inside the spa.

## LUCITE® ACRYLICS

### ACRYLIC COLOR OPTIONS



**Sterling Marble**

Sterling Marble  
only color available  
for Swim Spas



**Tuscan Sun**

Only Available  
on Spas



**Storm Clouds**

Only Available  
on Spas



**Smoky Mountain**

Only Available  
on Spas

## SPA SKIRTING

### SKIRTING COLOR OPTIONS



**Confer  
Gray Skirting  
Standard**



**Confer  
Black Skirting  
Standard**



**Elite  
Coastal Gray  
Skirting  
UPGRADE**



**Elite  
Ash Skirting  
UPGRADE**

Note: Color samples shown are representations of actual color, and are for identification only. Because the color may vary, there is no guarantee that this color will be an exact match to the image shown.

# IN.TOUCH2® WI-FI REMOTE

Control all functions of your spa from your iOS or Android smartphone or tablet and the In.touch.2® app. Use predefined spa experiences or customize your own.



THE IN.TOUCH 2® APP,  
THE COOLEST WAY TO  
ENJOY YOUR SPA



in.touch 2® compatible with the control systems of all Dynasty spas models. The in.touch 2® app can be used from an iOS (version 8 or later) or Android (version 4.4 or later) smartphone or tablet.

## INTUITIVE LAYOUTS / EASY CONTROL OF ALL SPA FUNCTIONS / UNLIMITED OPTIONS



Turn on your spa's LED lighting system and create the ideal visual experience for the perfect moment.



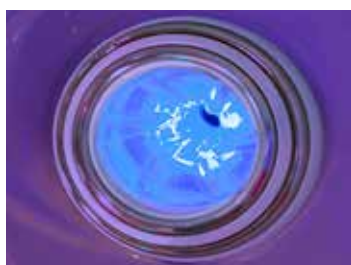
Simply select the filtration configuration that best suits your needs and add your personal settings



Start your pool fountains and waterfalls from afar and control their water flow.



Set the water temperature or select one of the suggested economy modes



Full remote control of jets and preprogrammed spa experiences activated when needed.

## IN.STREAM 2, INTEGRATED BLUETOOTH™ AUDIO SYSTEM

Elevate your spa experience with the incredible sound of your favorite music streamed right from the comfort of your water sanctuary! The in.stream 2 audio station is a compact, rugged, and splash-proof all-in-one outdoor audio system that delivers outstanding sound quality using advanced Class D amplifier technology. It's designed to enhance your backyard audio experience effortlessly. With easy connectivity, you can control your audio player or smartphone directly from your spa keypad, allowing you to enjoy your relaxing soak without missing a beat.



## IN.MIX, LED CONTROLS



Experience mesmerizing underwater light shows that not only enhance your soak but also transform your spa environment. With the ability to shift from a lively party vibe to a serene romantic escape, these lights also serve as an important safety feature after sunset. The in.Mix adjustable and independent zone LED lighting system boasts 113 points of light, illuminating everything from the footwell to the spa's edge. Enjoy the captivating display of colors dancing across the water, adding a unique charm to your evening ambiance.



## CMP OZONE GENERATING SYSTEM

All our spas are equipped with an ozone treatment system. Odorless and nonirritating to the skin and eyes, ozone is a powerful purifier. It simplifies your spa maintenance and reduces the amount of chemicals needed. It is effective against bacteria, algae, and organic pollutants. In addition, it stabilizes the pH level and helps increase the life of your equipment. For soft and clear

## MANAGING YOUR SPA IS CHILD'S PLAY!



Full-featured K.1000 keypad with color capacitive touch screen display.

Fun, simple, engaging Parting ways with physical buttons, keys and overlays, our K.1000 touch screen keypad is fun to use and simple to learn. It features an intuitive and engaging one level menu interface

Mode and function selection wheels, all-on/all-off one touch activation key, interactive display icons and on-screen reminders make for a unique user interface. Get direct feedback and seamless interaction with your spa and its value added accessories like in.mix and in.stream 2

K.1000 - is standard on the Twin Palms, Nassau Royale, Caribbean Breeze, Coconut Bay, Pleasure Cove, Palm Island, Paradise Bay and all Swim Spas



The K.506 is built with all the great features you've come to love in the in.k800, but in a smaller package. It is discreet, compact, and unobtrusively beautiful. Save space without losing out on function.

K506 - is standard on the Bimini, Treasure Cay, Sunset Cove, Tranquility Harbor, Serenity Cove, Ocean Breeze, Cabana Bay



## IN.YE - CONTROL SYSTEM

IN.YE control systems are designed to fit in perfectly and to be easily installed, powered, and connected to pumps and accessories of spas of all sizes and configurations. IN.YE control systems deliver optimal performance and total control, giving spa owners the immediate satisfaction of getting a lot more than what they expected from their spas. Offers a full range of configurations and fully powers all the equipment and accessories of your spa.



## Oversized Pump System

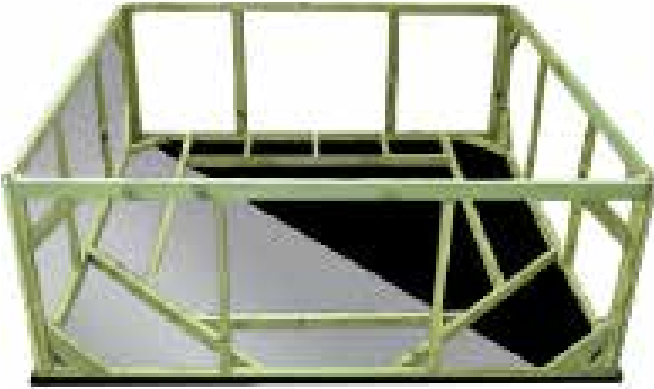
Energy efficient on both high and low speeds with 56 frame design. Installed on an anti-vibration and noise reducing pad.



## Superior Bond - Double Protection

Glued and clamped fittings ensure in an extra secure bond between pipes and jets.

## MAINTENANCE-FREE



Quality pressure-treated wood structure (50-year life expectancy, meets environmental standards). Removable side panels. Anti-moisture ABS plastic base for increased stability and heat retention. Base and frame with ThermoFoil™ protection. Frame is bonded to shell.

## DYNACRETE™ BASE



Made of recycled acrylic and resin. Isolates frame bottom from moisture. The structure's flat base prevents the creation of air pockets, thus ensuring increased stability and foot support rigidity. The most durable and solid spas in the industry.

## REINFORCED FINISH



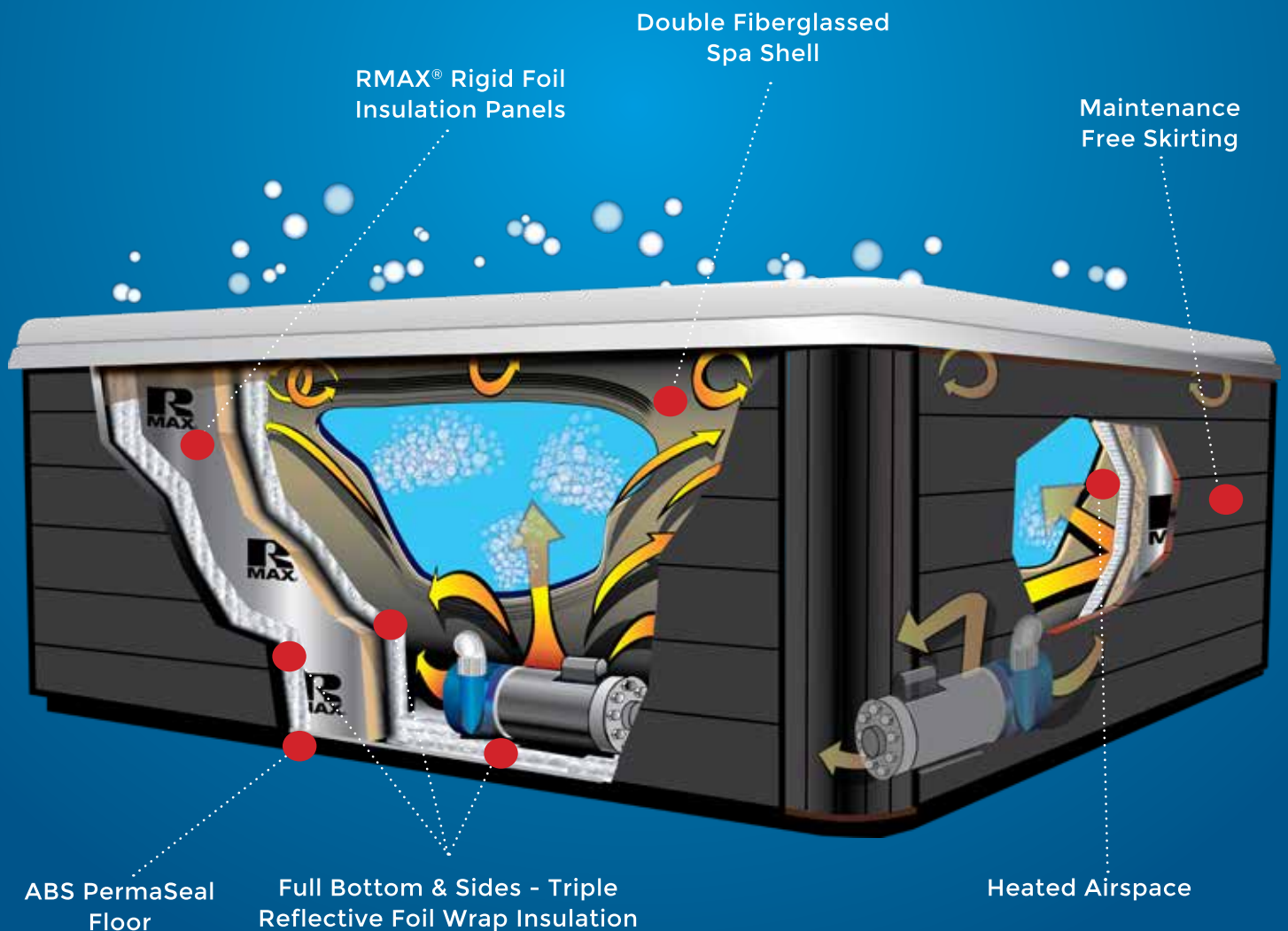
Lucite® Cast Acrylic and reinforced fiberglass finish to ensure strength and durability. Hand rolled process eliminates air pockets which can cause separation

# HEATSHIELD

## INSULATION SYSTEM



- Up To 7 Times The R-value of other hot tubs on the market.
- Acts as sound barrier
- Added protection against freezing
- The unique design protects equipment,
- Allows easy access for service and upgrading



Double Fiberglassed  
Spa Shell

RMAX® Rigid Foil  
Insulation Panels

Maintenance  
Free Skirting

ABS PermaSeal  
Floor

Full Bottom & Sides - Triple  
Reflective Foil Wrap Insulation

Heated Airspace

# Covers



Double Sewn, Hand Grips Provide superior durability and an extra level of comfort.



Insulated Heat Bags Helps to eliminate heat loss between the cover fold when spa is not in use.



4 Child Resistant Locking Mechanisms Fasten to each corner of the spa, providing that extra peace of mind.



Sealed Interior Hexene Poly Bag Protects inner foam core by reducing sweating and moisture.

Dynasty Spas recommends that you keep your cover on and locked when spa is not in use!

## SPA SAFETY

- Maintain constant adult supervision when children are in or near ANY body of water.
- Install fences, barriers and spa covers to prevent unsupervised access, especially by young children.
- Always completely remove your spa cover before using your spa.
- Inspect your spa equipment on a regular basis to ensure that it is in good working order and that it is safe.
- Always test the temperature of your spa's water before entering the spa. It is recommended that maximum water temperature never exceed 104°F (40°C). Do not soak for more than 15 minutes at one sitting in 104°F (40°C) water.
- Individuals with certain medical conditions, such as heart disease, diabetes, high or low blood pressure, and pregnant women, should not use a spa without advance approval by their physician. If a person has any doubt as to whether a medical condition should limit their use of a spa, they should seek prior consultation with their physician. Individuals with open cuts or wounds should not use a spa until completely healed
- Never use a spa when you are alone and never use a spa while using or after using alcohol or drugs that may cause sleepiness, drowsiness, or raise or lower blood pressure.
- Ask your city about any specific rules and regulations that apply to spa ownership, including local electrical codes.
- Do not allow unsafe or risky behavior in and around the spa.
- Consult with a licensed electrician for installation of or any work to your spa. If you are installing your own spa, it is your responsibility that all work performed complies with the National Electrical Code and all other applicable codes and regulations.
- Your spa's jets, grates, skimmer and main drain should be properly maintained and secured. Spa users should be instructed not to stick any part of their body into such outlets as entrapment and drowning can occur. Spa users with long hair should also be cautioned not to get their hair near such outlets.
- Keep a first aid kit in close proximity to your spa.
- Maintenance and safety manuals contain detailed tips and recommendations and should be read, followed and applied on a regular basis.
- We encourage all spa owners to request safety related publications from the Association of Pool and Spa Professionals (APSP), including: "The Sensible Way To Enjoy Your Spa or Hot Tub," and "Pool and Spa Emergency Procedures for Infants and Children." These APSP publications can be ordered from the APSP by calling or writing them at the APSP, 2111 Eisenhower Avenue, Suite 500, Alexandria, VA 22314, (703) 838-0083, or by visiting the APSP consumer Web site at [www.theapsp.org](http://www.theapsp.org).



## REST ASSURED DYNASTY SWIM SPA AND SPA WARRANTY

YEAR

20

WARRANTY

Twenty Year Shell Structure Warranty Dynasty Spas warrants the spa shell against loss of water caused by defects in materials and/or workmanship for a period of TWENTY YEARS from the original date of purchase.

3

YEAR

WARRANTY

Three Year Surface Finish of Shell Warranty Dynasty Spas warrants the surface finish of its spas to be free from blistering and cracking due to defects in the acrylic surface material for a period of THREE YEARS from the original date of purchase.

5

YEAR

WARRANTY

Dynasty Spas warrants the electrical equipment components - specifically the control system (pack and topside), pumps, heaters, and air blowers against malfunction/or defects in materials and/or workmanship for a period of THREE YEARS from the original date of purchase, to the original owner only. Years four and five will be prorated to 50% of replacement cost of components and labor. This Limited Warranty does not apply if the failure is caused by or contributed to by any of the following: improper wiring, use of extension cords, improper alterations or modifications, or failure to plug into isolated service, as indicated by the manufacturer's specifications. Further, this Limited Warranty follows the guidelines of the original equipment manufacturers. The labor coverage is an extended warranty program maintained by Dynasty Spas on your behalf. Your dealer or authorized repair facility has details and procedures for submitting warranty claims.

5

YEAR

WARRANTY

### Five Year Plumbing Warranty

Dynasty Spas warrants all plumbing parts to be free from defects in material and/or workmanship for a period of THREE YEARS from the original date of purchase, as long as the spa is owned by the original purchaser. Years four and five will be prorated to 50% of replacement cost of components and labor. Further, this Limited Warranty specifically covers leaks from the wall fittings, jet fittings, internal plumbing, internal glue joints, freeze drains and all bonded parts, including the filter compartment and light lens. Damage resulting from failure to properly winterize the spa prior to freezing weather, or failure to properly winterize the spa after a component failure, is not covered under this Limited Warranty.

1

YEAR

WARRANTY

### One Year - Other Warranty

See Dynasty Spas Limited Warranty for additional information



## Our 4 best reasons to buy “MADE IN AMERICA” Spas

American Jobs

**American Jobs** - The loss of American family owned manufacturing jobs over the past 15 years has had a staggering effect on the United States economy and job market. Our American made spas and swim spas products further ensure that Dynasty Spas will keep their manufacturing efforts in the United States and employ American workers.

Environment

**Environmental Concerns** - Purchasing Made in America spas and swim spas just makes environmental sense. American - made spas and swim spas carry a much smaller carbon foot print than products produced overseas. Shipping products around the globe comes at a high environmental cost due to plane and ship emissions and buying U.S. products dramatically cuts those cost down which in return helps with times.

Quality

**Quality** - When you see “Made in the USA” sticker on your spa, you know that you have your hands on good quality American made spa. Dynasty Spas manufactures the spa and swim spas in the U.S. have full control of the process from the materials being used to the way products are being constructed. This complete oversight over the manufacturing process results in a quality spa that cannot be matched by outsourcing.

Factory Service

**Factory Service** - Dynasty spas factory service starts by everyone at Dynasty Spas treating other like they would like to be treated. Returning calls on the same day or next morning. Following up, if we transfer to a colleague to make certain our customers is taken care of. Giving feedback to our customers on all their orders, spas, covers and parts. Doing all we can to get orders to our customer as quickly as possible without quality compromise. Providing reliable and swift back up support to our customer service representatives. It is saying what we will do and then doing what we have said. Not being afraid to make promises and going the distance to keep them. It is putting our customers first on all we do. We respect our customers and trust that our Dynasty Spas customers put in us.

Dynasty Spas is proud to make out innovative spas and swim spas products right here in the United States and we hope you share the pride when you use American Made Dynasty Spas.

The full content of this brochure is protected by the © Copyright laws of the United States. We own all rights and license all in the text, images, photographs, graphics, and other content provided.